

# 2023

## Community Impact Report



### **20,000+ Meals Delivered: Fighting Food Insecurity**

Supporting over 200 clients with subsidized meal programs and inclusive volunteer opportunities.

### **2,400+ Clients Served: Bridging Newcomers & Community**

Through innovative programs like the Language Lab, CBICI supports newcomers with immigration processes, enriching workshops, and community activities.

### **\$5.25M Invested: Building Affordable Futures**

Major housing projects like Eleanor's Court are creating 25 units of deeply affordable, supportive housing.

### **Net-Zero Commitment: 130 Tonnes CO2 Reduction**

Green renovations at New Dawn Centre paving the way for a sustainable, fossil-fuel-free future.

### **Excellence in Care Services**

Home Living programs and Pine Tree Park Care Home deliver essential services with top-tier accreditation and consistency.

### **Cultural Catalyst for Unama'ki, Cape Breton Island**

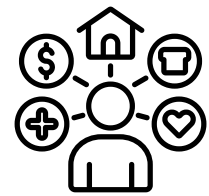
Eltuek Arts Centre is using creativity to drive innovation, growth, and community revitalization for our Island.



**Vision:** A self-reliant people in a vibrant community



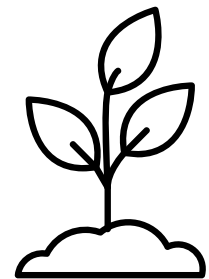
**Community reinvestment of all profits**



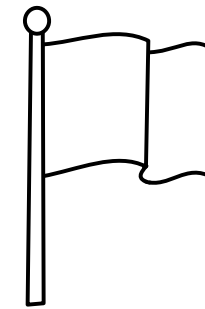
**Community Needs:** Home Care, Rental Properties, Meals on Wheels, New Dawn Centre, Pine Tree Park Care Home and Home Living



**Not-for-profit** community development corporation; governed by a volunteer Board of Directors



**Community Change:** Immigration, Governance, Eltuek Arts Centre, Food Security, Access to Capital, Community Engagement



**50 years old in 2026:** Founded in 1976 and today has over 200 staff across 17 companies



# Nourishing our Community



**20K**

fresh, hot, nutritious meals delivered to seniors every year

**217**

unique clients served

**\$70K**

in subsidies from the Meal Subsidy Fund

**24K**

kilometres driven



**1372**

volunteer deliveries



**3306**

volunteer hours served



**1400**

meals distributed to the North End Community Pantry and Ally Centre



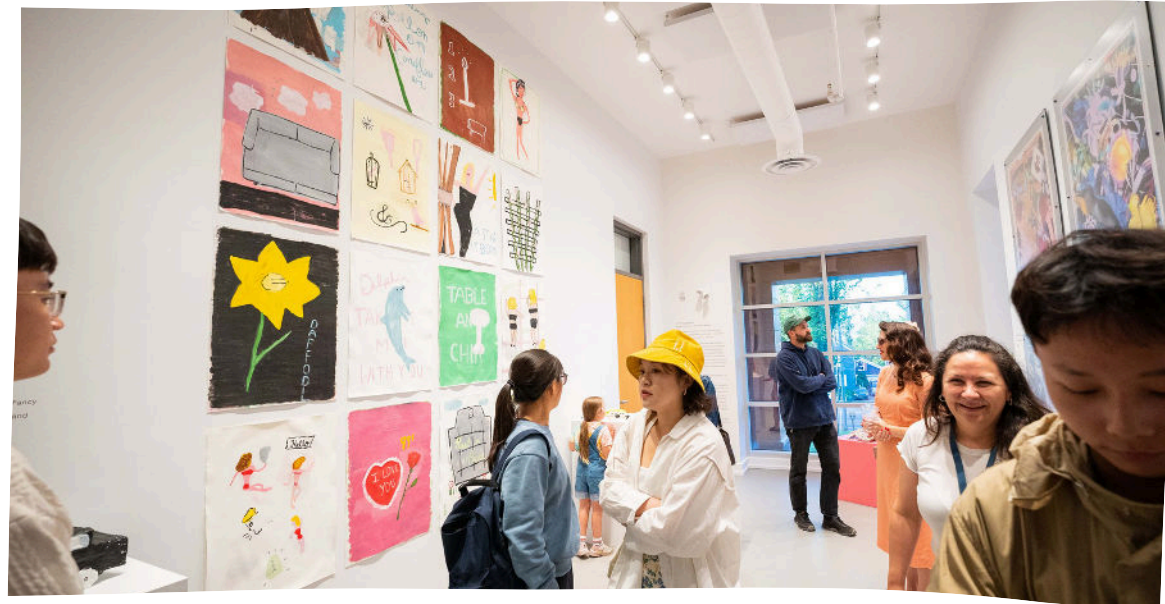
**83**

volunteers helping deliver 400 meals per week





# Eltuek Arts Centre



# Empowering Newcomers Through Language & Integration

**2405**

clients served; 2057 students  
and family members; 348  
nonstudent newcomers



**622**

attendees at workshops/events  
(financial literacy, cooking, tax clinics)

**234**

unique clients served through  
AIP (Atlantic Immigration Pilot)



**61**

nonstudent clients self-reported obtaining  
their permanent residency

**1328**

one-on-one supports for  
international students



**107**

students participated in tours to Goat Island, Ski Ben  
Eoin, Cape Smokey and the Bell Museum.

**62**

clients started learning in the  
Language Lab



**16**

new employers interested in AIP



# Housing for a Brighter Future

**Abbey Ridge** joined the New Dawn family on October 1st, 2023. In November 2023, Abbey Ridge opened its doors to its first residents. Since opening, the word of Abbey Ridge has spread, and referrals continue to roll in on a continuous basis.

The Supportive Living Program at Abbey Ridge continues to evolve based on the needs of its residents and constant reflection to ensure the program continues to be person-centred with the needs of residents at the forefront of change.

By the end of 2023, Abbey Ridge had received 11 referrals and was home to four permanent residents.

Abbey Ridge has facilitated, on average, four in-house life skills programming workshops a month where residents were exposed to new life skills that will help them transition to independent living and adulthood.

Programs vary based on the needs of our residents but have lately consisted of cooking, budgeting, healthy relationships, cleaning, and coping skills.

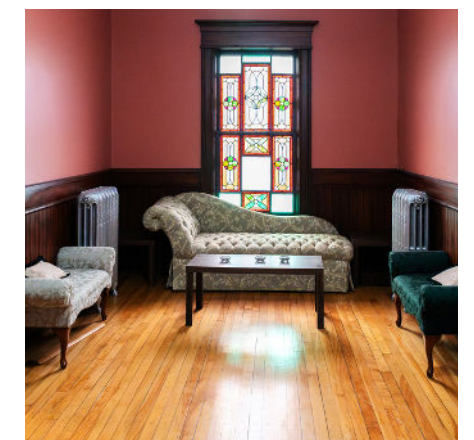
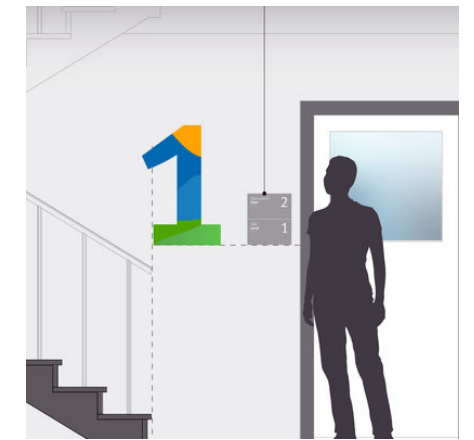
Adopt-a-Teen and a group of CBU COMS students supported Abbey Ridge by mass donating hygiene supplies. Our youth greatly appreciates donations like these as they alleviate a huge financial cost and create barrier-free access to items that are a necessity.

Thanks to the overwhelming community support for affordable housing in CBRM, New Dawn secured funding through the federal Rapid Housing Initiative to build 25 units of supportive housing in partnership with the Ally Centre of Cape Breton in April 2023.

Pre-construction and design work began on **Eleanor's Court** in May 2023, and the construction team broke ground in November 2023.

We anticipate the building being ready for occupancy by early 2025.

Capital funding for the project was secured from the federal Rapid Housing Initiative fund and the Reaching Home fund. Operating funding is coming from the Province of Nova Scotia's Department of Community Services.





CAFE MARIE



# Care at its Core

## **Homecare Milestone**

New Dawn Homecare hit a milestone in providing 5 years of service with a client that requires a Nursing staff and a Personal Care Assistant for 24 hours a day, 365 days a year.

## **New name: Pine Tree Park Care Home.**

Name change to Pine Tree Park Care Home and Home Living.

## **100% occupancy for the first half of 2023 (96–98% thereafter).**

We have had an occupancy rate of 100 percent for the first 5 months of 2023 and thereafter 96 –98 percent for the remainder of the year.

## **Accreditation achieved: Exemplary Standing.**

New Dawn was accredited with Exemplary standing under the Qmentum accreditation program.



ACCREDITATION  
CANADA

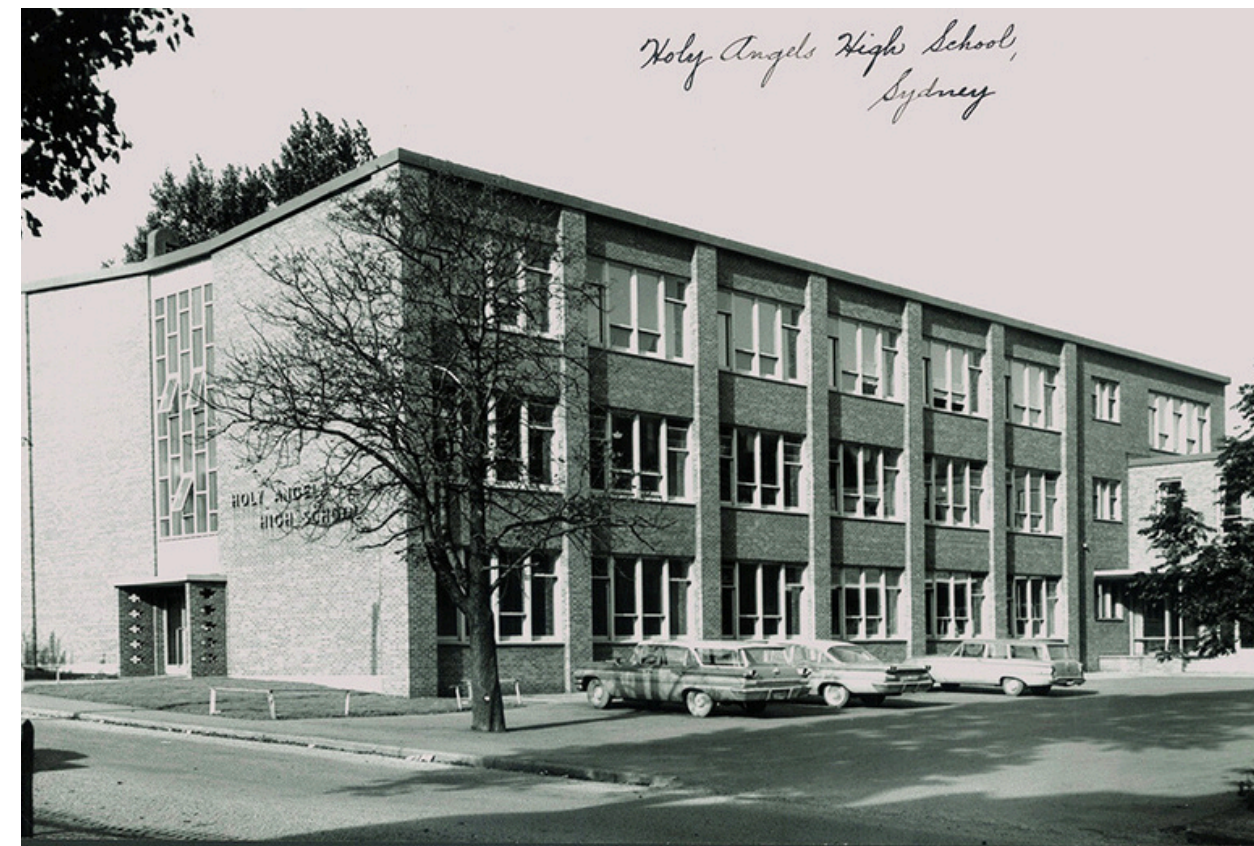
# Sustainability in Action

New Dawn was among the first projects to receive funding under the provincial Sustainable Communities Challenge Fund in July. New Dawn received \$776,159 to replace the windows and install heat pumps to replace the heating and cooling system in the New Dawn Centre (original to the building circa 1958).

**“This investment allows us to reduce the building’s GHG emissions by a minimum of 130 tonnes of carbon dioxide per year. This is equivalent to the CO2 sequestered by 155 acres of trees in a year. It is also the pivotal investment that secures our ability to repurpose, rather than tear down and reconstruct, this building in pursuit of more efficient operations,”** New Dawn’s President and CEO Erika Shea said.

In the fall/winter of 2023, all windows in the building were replaced with energy-efficient windows, the existing oil heating system was removed, and 80 heat pumps were installed.

The roof has been reinforced for the potential future installation of solar panels. This will mean a building that consumes no fossil fuels, aligning with New Dawn’s net-zero organization goal.



# 2023

## Board of Directors

CHAIR, ALEX PAUL  
VICE-CHAIR, KALIE (YUJIN) WANG  
PRESIDENT, ERIKA SHEA  
DR. TERRY GIBBS  
MAUREEN BALDWIN, CND  
LIAM O'ROURKE  
STAN JOHNSON  
ANKIT WADHWA





# Supporting a culture of self-reliance



New Dawn  
Enterprises